



**Trencher  
TX 413  
Compact Utility Loaders**

**Model No. 22465 - 240000001 and up.**

## Parts Catalog

### Ordering Replacement Parts

To order replacement parts, please supply the part number, the quantity, and the description of each part desired.

### Understanding Reference Numbers

Each identified part in an illustration has a reference number. The reference number for a part also appears in the parts list, along with other information about the part.

This catalog uses two special reference number formats, one to indicate parts in a service assembly and another to indicate the quantity of a given part in an illustration.

### Service Assembly Reference Numbers

Parts in service assemblies have reference numbers in the form a:b. The a represents the reference number of the entire service assembly and the b represents a sequential number unique to each part within the service assembly.

For example, a wheel assembly might be identified by reference number 6, the tire by 6:1, the valve by 6:2, and the wheel by 6:3. When you order the assembly identified by reference number 6, you receive all parts identified by reference numbers 6:1, 6:2, and 6:3. However, you may also order any part individually. Reference numbers of this type appear in illustrations and in part lists.

### Reference Numbers Indicating Quantity

In an illustration, if a reference number indicates more than one part, the reference number has the form nX y. The n represents the quantity of the part, the X is the multiplication symbol, and the y represents the reference number.

For example, in an illustration, the reference number 2X 37 means that two of the parts identified by reference number 37 are indicated.

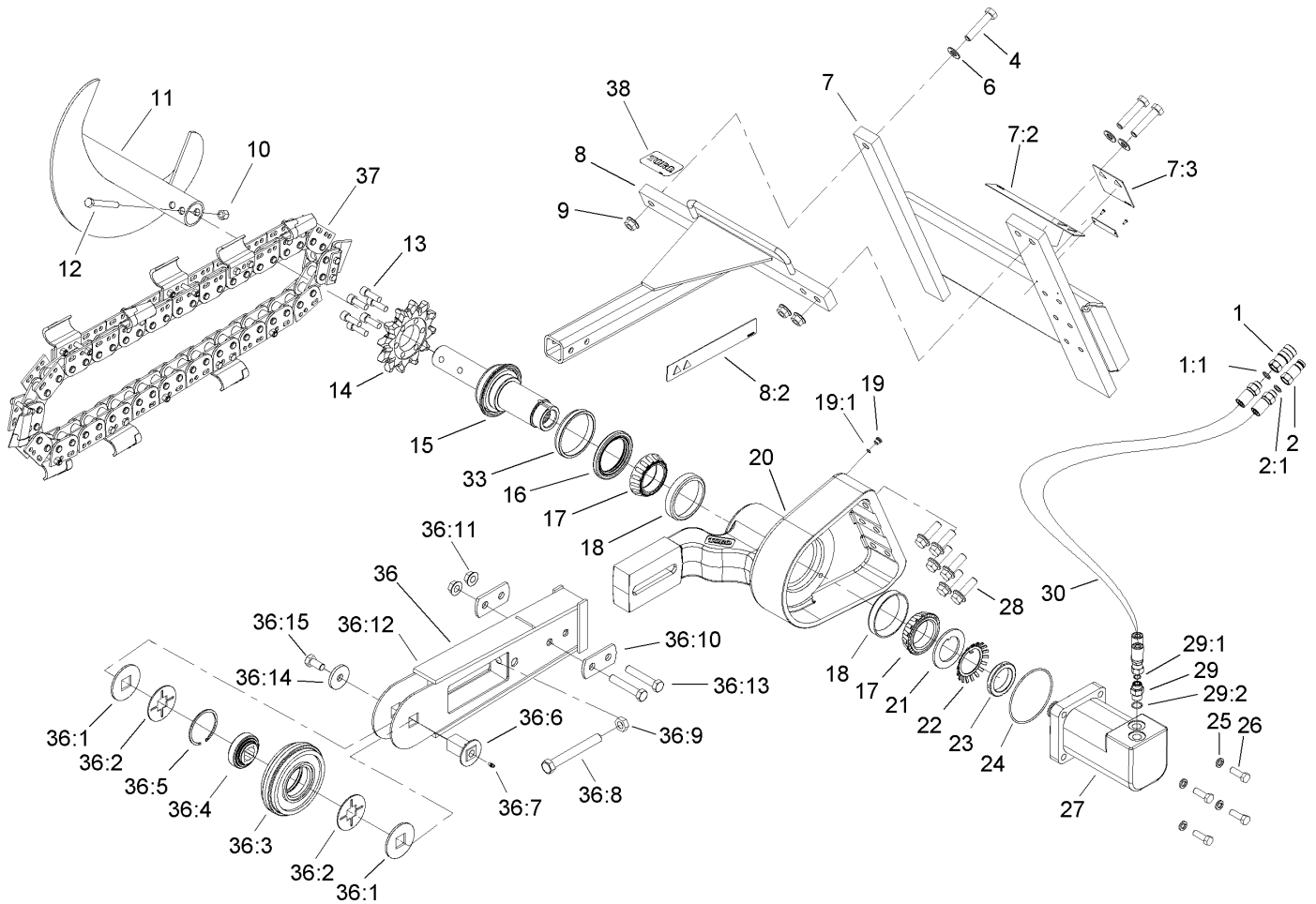
# Contents

| Description                           | Page    | Description                          | Page    |
|---------------------------------------|---------|--------------------------------------|---------|
| Trencher Head Assembly                | ..... 3 | Trencher Chain Assembly No. 106-7626 | ..... 6 |
| Hydraulic Motor Assembly No. 104-5701 | ..... 5 | Attachments and Accessories List     | ..... 7 |

## Part Description Abbreviations

Part descriptions in this catalog may include the following abbreviations.

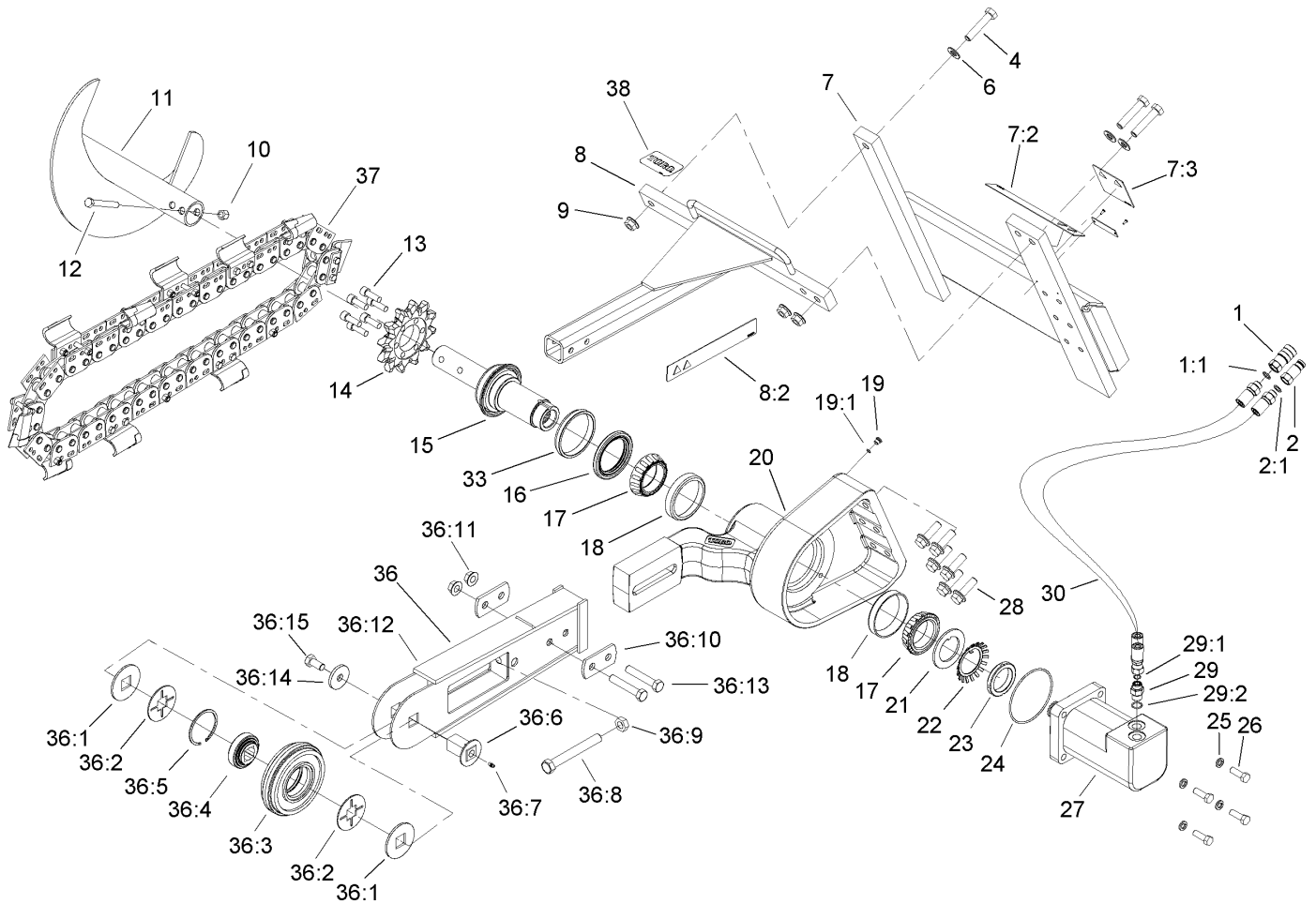
|             |                                |             |                                  |
|-------------|--------------------------------|-------------|----------------------------------|
| AR. ....    | as required                    | INC. ....   | incorporated                     |
| ASM. ....   | assembly                       | LH. ....    | left hand                        |
| BBC. ....   | blade brake clutch             | NI. ....    | nylon insert                     |
| CARR. ....  | carriage                       | NPTF. ....  | national pipe thread fine        |
| DEG. ....   | degrees                        | PFH. ....   | phillips flat head               |
| EXT. ....   | external                       | PPH. ....   | phillips pan head                |
| FH. ....    | flat head                      | PPHTF. .... | phillips pan head thread forming |
| GA. ....    | gauge                          | PRH. ....   | phillips round head              |
| HF. ....    | hex flange                     | PTH. ....   | phillips truss head              |
| HH. ....    | hex head                       | PTO. ....   | power-take-off                   |
| HHF. ....   | hex head flange                | RH. ....    | right hand                       |
| HHFTF. .... | hex head flange thread forming | ROPS. ....  | roll-over-protection-system      |
| HJ. ....    | hex jam                        | SFH. ....   | slotted fillister head           |
| HLH. ....   | hex lag head                   | SHH. ....   | slotted hex head                 |
| HOC. ....   | height-of-cut                  | SHWH. ....  | slotted hex washer head          |
| HSBH. ....  | hex socket button head         | SPH. ....   | slotted pan head                 |
| HSFH. ....  | hex socket flat head           | SQH. ....   | square head                      |
| HSH. ....   | hex socket head                | SRH. ....   | slotted round head               |
| HWH. ....   | hex washer head                | STD. ....   | standard                         |
| HWHTF. .... | hex washer head thread forming | TAP. ....   | self tapping                     |
| HYD. ....   | hydraulic                      | TTH. ....   | torx truss head                  |



## Trencher Head Assembly

| Ref  | Part No.    | Qty. | Description       |
|------|-------------|------|-------------------|
| 1    | 104-6115    | 1    | Coupler-Female    |
| 1:1  | 107-9300    | 1    | Seal Kit          |
| 2    | 104-6114    | 1    | Nipple-Connector  |
| 2:1  | 107-9301    | 1    | Seal Kit          |
| 4    | 104-5895    | 3    | Screw-HH          |
| 6    | 3256-27     | 3    | Washer-Flat       |
| 7    | 106-7632    | 1    | Mount ASM         |
| 7:2  | 99-9952     | 1    | Decal-Danger      |
| 7:3  | 99-9953     | 1    | Decal-Danger      |
| 8    | 106-7633    | 1    | Safety Bar ASM    |
| 8:2  | 99-9952     | 2    | Decal-Danger      |
| 9    | 32128-50    | 3    | Nut-Flange        |
| 10   | 3296-23     | 1    | Nut-Lock, NI      |
| 11   | 104-5912-03 | 1    | Auger ASM         |
| 12   | 325-35      | 1    | Screw-HH          |
| 13   | 3274-4      | 6    | Screw-HSH         |
| 14   | 104-1964    | 1    | Sprocket-Trencher |
| 15   | 104-1969    | 1    | Shaft-Trencher    |
| 16   | 104-1967    | 1    | Seal-Shaft        |
| 17   | 104-1966    | 2    | Cone-Bearing      |
| 18   | 104-1965    | 2    | Cup-Bearing       |
| 19   | 353-990     | 1    | Plug              |
| 19:1 | 237-78      | 1    | O-Ring            |
| 20   | 104-1931-03 | 1    | Mount-Boom        |

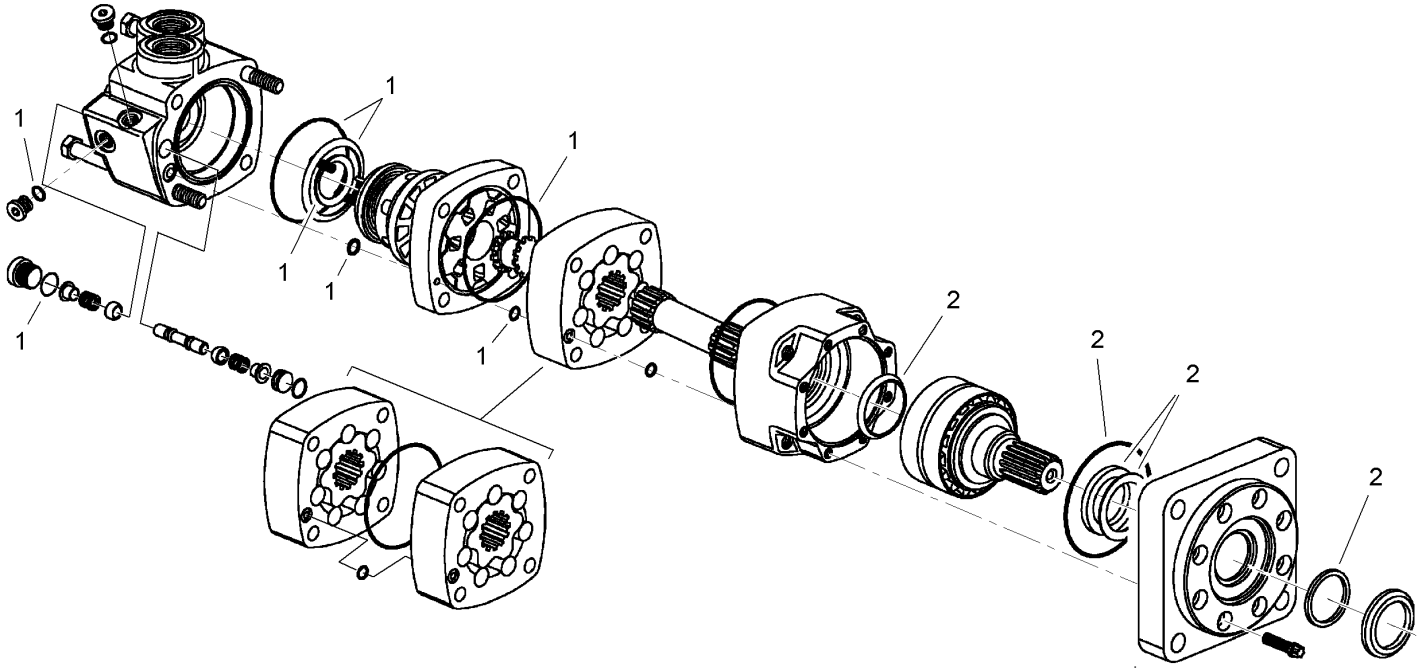
| Ref   | Part No.    | Qty. | Description           |
|-------|-------------|------|-----------------------|
| 21    | 104-1972    | 1    | Washer-Tongued        |
| 22    | 104-5915    | 1    | Lockwasher-Bearing    |
| 23    | 104-1973    | 1    | Locknut-Bearing       |
| 24    | 104-1920    | 1    | O-Ring                |
| 25    | 3253-7      | 4    | Washer-Lock           |
| 26    | 325-6       | 4    | Screw-HH              |
| 27    | 104-5701    | 1    | Motor-HYD             |
| 28    | 104-5870    | 6    | Screw                 |
| 29    | 340-6       | 2    | Fitting-HYD, Straight |
| 29:1  | 237-30      | 1    | O-Ring                |
| 29:2  | 237-80      | 1    | O-Ring                |
| 30    | 106-7702    | 2    | Hose ASM              |
| 33    | 104-5935    | 1    | Spacer                |
| 36    | 104-1948    | 1    | Boom ASM              |
| 36:1  | 104-1942    | 2    | Cap-Roller            |
| 36:2  | 104-1943    | 2    | Spacer-Roller         |
| 36:3  | 104-1951    | 1    | Roller-Nose           |
| 36:4  | 104-1995    | 1    | Bearing               |
| 36:5  | 104-1945    | 1    | Ring-Retaining        |
| 36:6  | 104-1955    | 1    | Pin ASM               |
| 36:7  | 302-5       | 2    | Fitting-Grease        |
| 36:8  | 104-1941    | 1    | Bolt-Adjustment       |
| 36:9  | 104-1944    | 1    | Nut-Jam               |
| 36:10 | 104-1983-03 | 2    | Plate-Support         |



## Trencher Head Assembly (continued)

| Ref   | Part No.    | Qty. | Description        |
|-------|-------------|------|--------------------|
| 36:11 | 32128-50    | 2    | Nut-Flange         |
| 36:12 | 104-5889-03 | 1    | Boom ASM           |
| 36:13 | 327-14      | 2    | Screw-HH           |
| 36:14 | 104-5901    | 1    | Washer             |
| 36:15 | 327-3       | 1    | Screw-HH           |
| 37    | 106-7626    | 1    | Trencher Chain ASM |
| 38    | 99-2385     | 1    | Decal              |

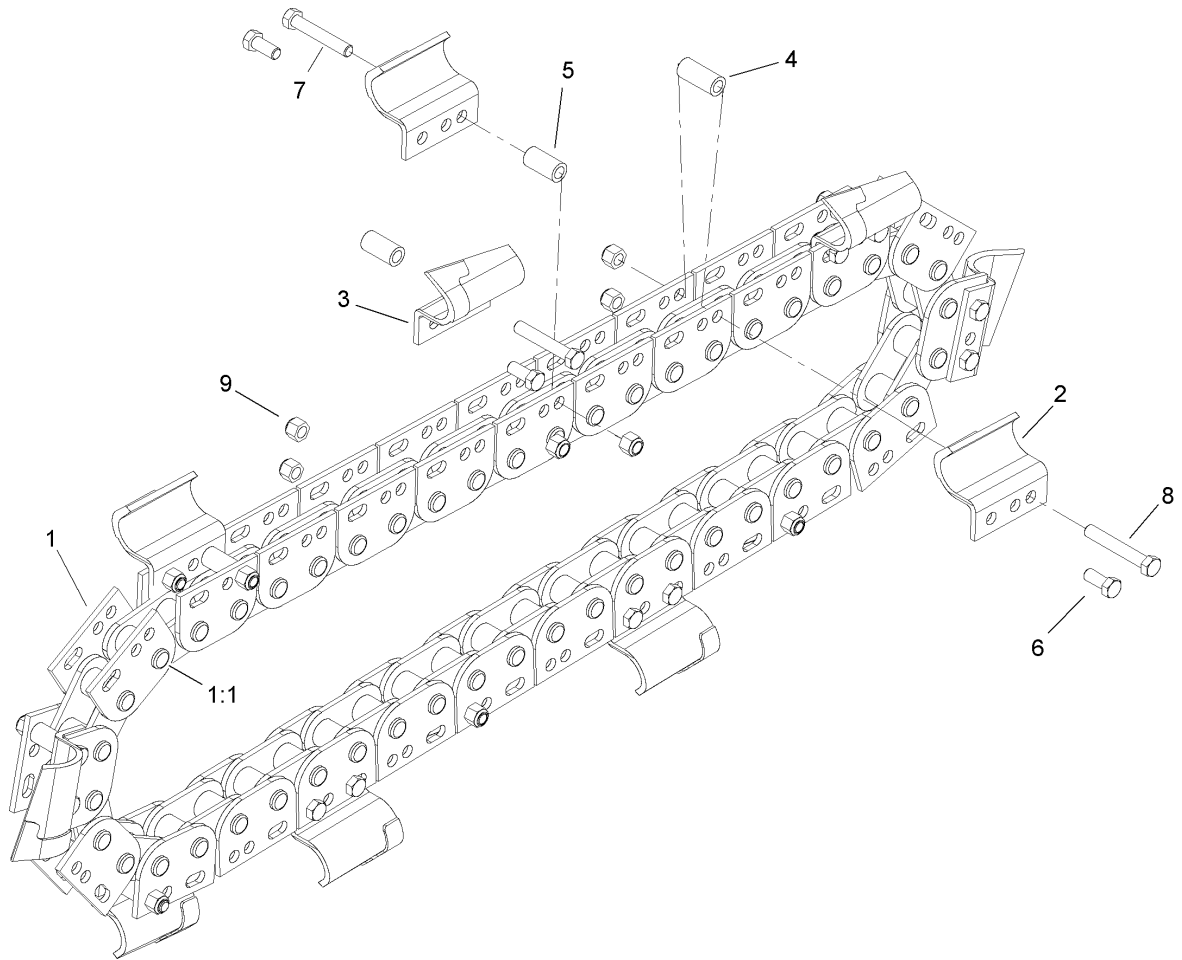
| Ref | Part No. | Qty. | Description |
|-----|----------|------|-------------|
|     |          |      |             |
|     |          |      |             |
|     |          |      |             |
|     |          |      |             |



### Hydraulic Motor Assembly No. 104-5701

| Ref | Part No. | Qty. | Description    |
|-----|----------|------|----------------|
| 1   | 107-9302 | 1    | Rear Seal Kit  |
| 2   | 107-9303 | 1    | Shaft Seal Kit |

|  |  |  |  |
|--|--|--|--|
|  |  |  |  |
|  |  |  |  |
|  |  |  |  |
|  |  |  |  |
|  |  |  |  |
|  |  |  |  |
|  |  |  |  |
|  |  |  |  |
|  |  |  |  |
|  |  |  |  |



## Trencher Chain Assembly No. 106-7626

| Ref | Part No. | Qty. | Description            |  |
|-----|----------|------|------------------------|--|
| 1   | 104-5848 | 1    | Chain-Bare, 24 Station |  |
| 1:1 | 104-5855 | 1    | Pin-Connecting         |  |
| 2   | 99-5925  | 6    | Tooth-Soil, RH         |  |
| 3   | 99-5924  | 6    | Tooth-Soil, LH         |  |
| 4   | 98-8222  | 3    | Spacer-Tube            |  |
| 5   | 99-5926  | 9    | Spacer-Tube            |  |
| 6   | 104-5939 | 12   | Screw-HH               |  |
| 7   | 104-5936 | 9    | Screw-HH               |  |
| 8   | 3211-42  | 3    | Screw-HH               |  |
| 9   | 3296-6   | 24   | Nut-Lock               |  |

# Attachments and Accessories

## For 22465 - Trencher, TX 413 Compact Utility Loaders

| Product Name                                   | Model/Part |
|--|------------|
| 6" x 2' Soil Chain Kit, Compact Utility Loader | 108-5543   |
| 6" x 2' Rock Chain Kit, Compact Utility Loader | 108-5544   |
| Crumber Kit                                    | 22464      |

