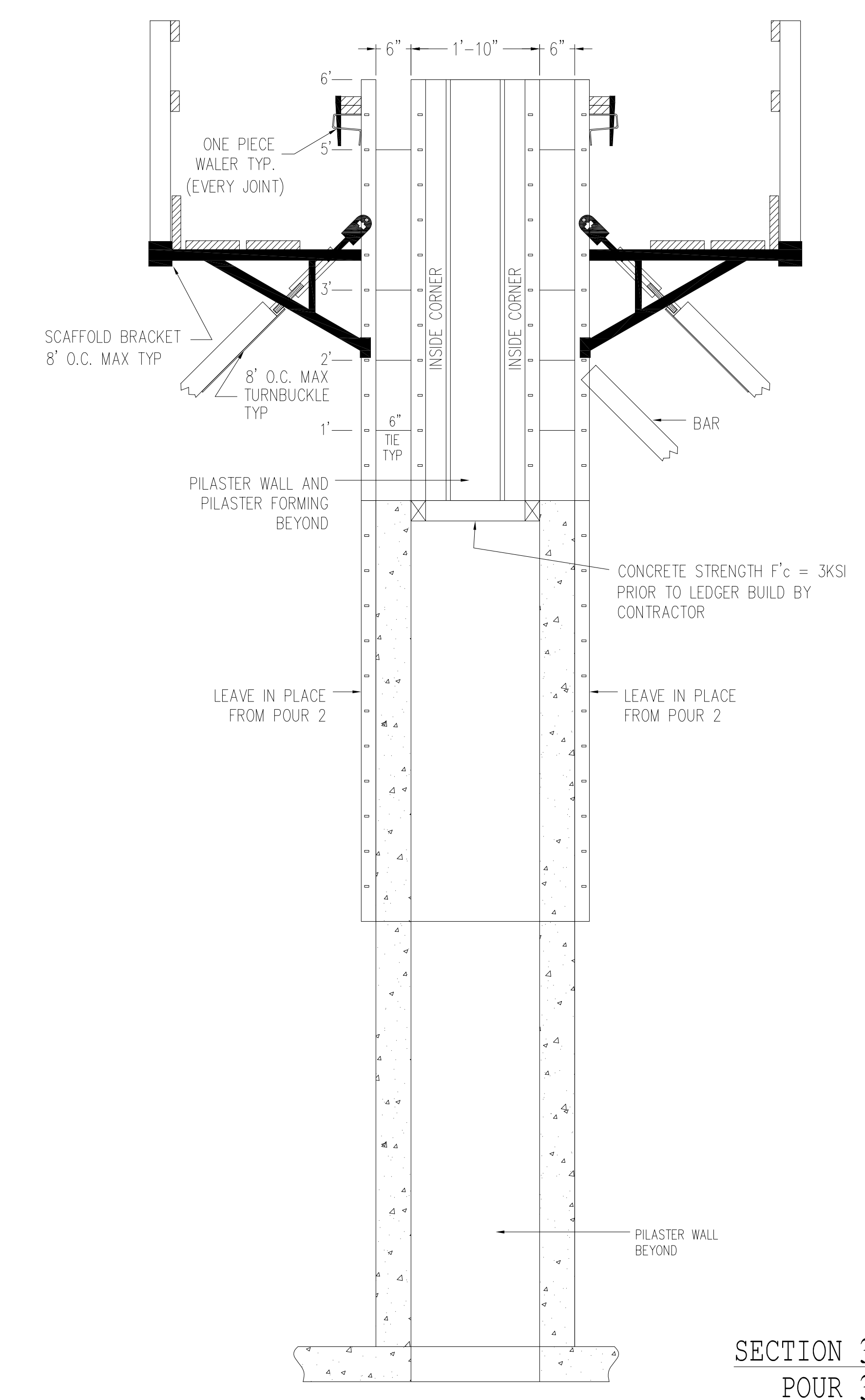
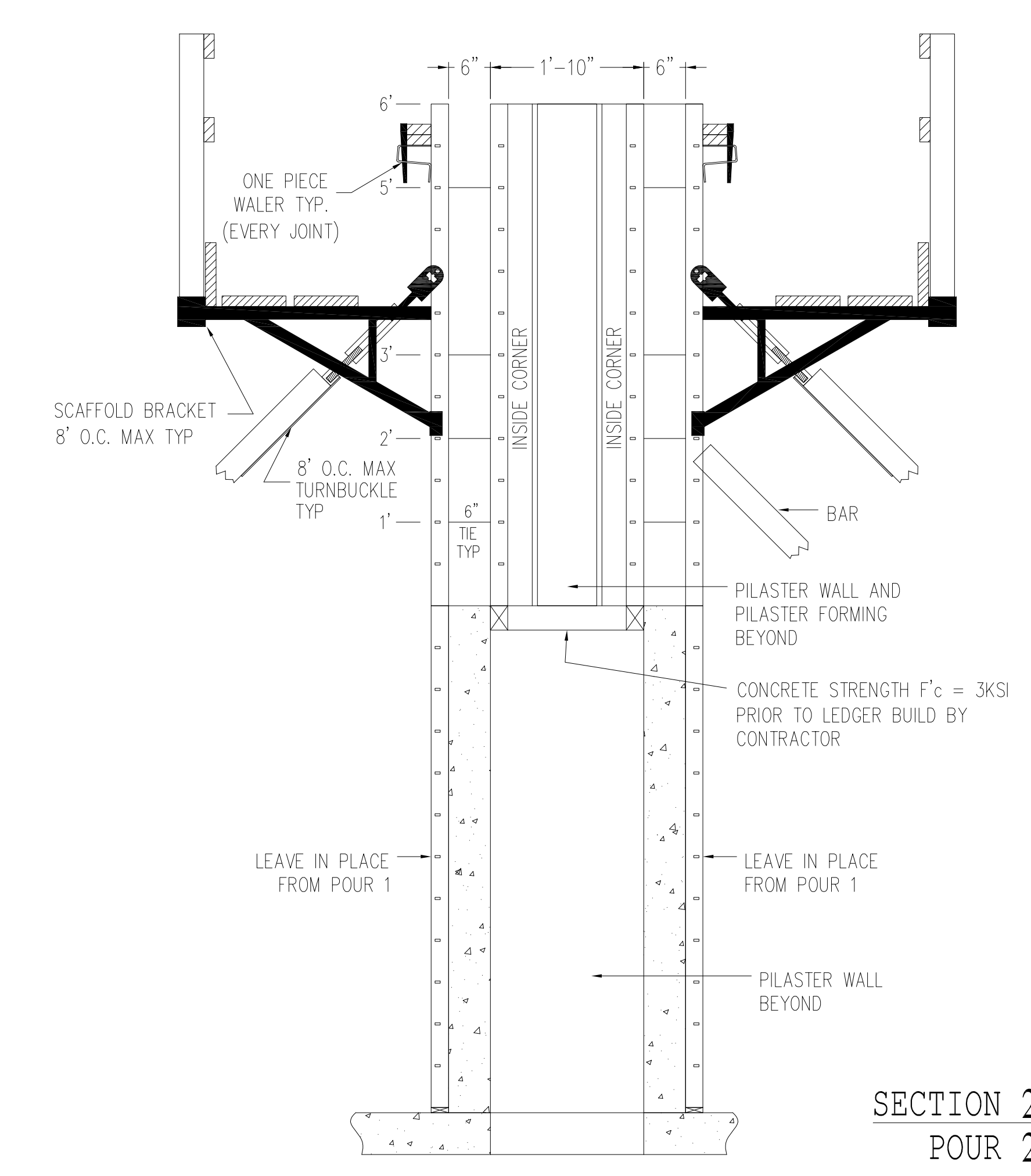


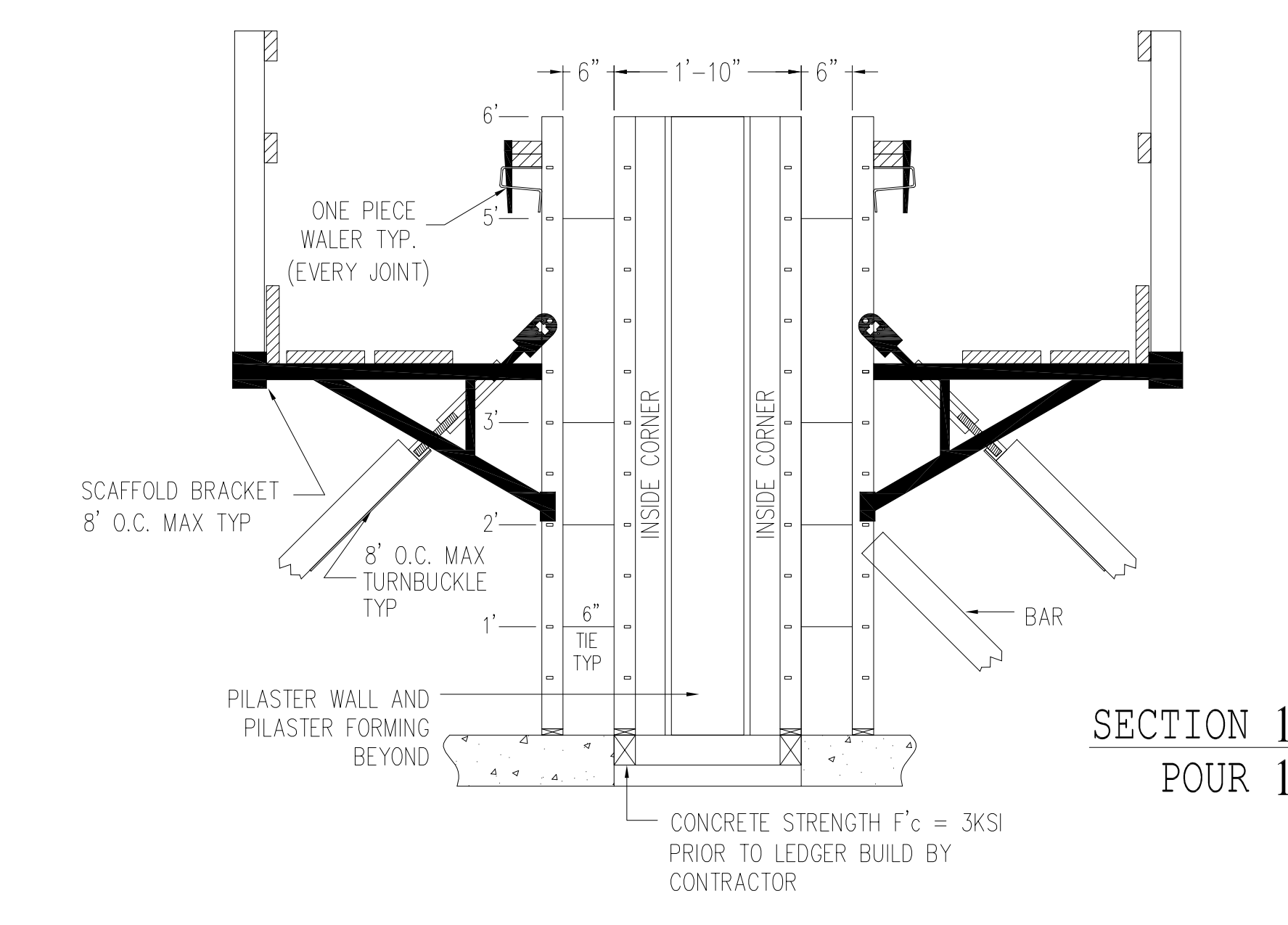
- NOTES:**
- TIES NOT SHOWN FOR CLARITY. ALL JOINTS TO BE TIED WITH HDSP TIES OR EQUIVALENT. REFER TO APPROPRIATE SECTION VIEWS FOR VERTICAL PLACEMENT OF TIES
 - ALL WALLS 6" THICK UNLESS NOTED OTHERWISE
 - CONTRACTOR TO VERIFY PLAN, SECTIONS AND DETAILS FOR DIMENSIONS PRIOR TO FORM ERECTION
 - FORMS MUST BE OILED BEFORE AND AFTER EACH USE.
 - 6" LIFTS TYPICAL
 - P_{MAX} = 750 PSF



SECTION 3
POUR 3



SECTION 2
POUR 2



SECTION 1
POUR 1

THE DUKE COMPANY
 ROCHESTER
 299 JEFFERSON ROAD,
 ROCHESTER, NY 14623
 PH: 585.292.9870
 FX: 585.292.9966

ITHACA
 7 HALL ROAD,
 ITHACA, NY 14850
 PH: 607.347.4455
 FX: 607.347.4454

- GENERAL NOTES**
1. This drawing is provided as a service to illustrate the assembly of standard forms only. It is not intended to be fully descriptive nor cover engineering details of such products or equipment or materials not furnished with said forming system for the interconnection therewith. In as much as The Duke Company does not control shute assembly or procedure, grade or quality of materials or equipment supplied by others, it is the responsibility of the contractor to integrate this drawing into a complete drawing suitable complete for construction purposes consistent with safe practice and overall project objectives.
 2. The Duke Company shall not be responsible in the event of any deviations, changes or alterations to the recommended assembly details described in this drawing.
 3. Wall and column forms must be adequately braced to safely support all foreseeable lateral loads associated with wind, eccentric loading, etc. The materials, quantities, location and methods of attachment and anchorage of the bracing design shall be the responsibility of the contractor based on job site conditions and applicable industry standards.
 4. This drawing is based on a maximum allowable concrete pressure of 1000 lbs/ft² as determined by the American Concrete Institute formulas and procedures. Contractor is fully responsible for slowing pour rate to stay within specified limits.
 5. Safe load capacity of ties is 2,000 lbs at a 2 to 1 safety factor unless noted otherwise.

SALESMAN

DRAWN BY: C.P.D.
 DATE: 09.05.2013
 SCALE: N.T.S.
 DRAWING NO:

NOTES

JBF = JOB BUILT FILLER
 BAR = BRACE AS REQUIRED
 P = PANEL (24" WIDTH)

PRELIMINARY FOR QUOTATION ONLY
 PRELIMINARY FOR CUSTOMER APPROVAL
 APPROVING WORKING DRAWING FOR USE IN FIELD

SHEET IDENTIFICATION

1

X6-X2 LIFT 3